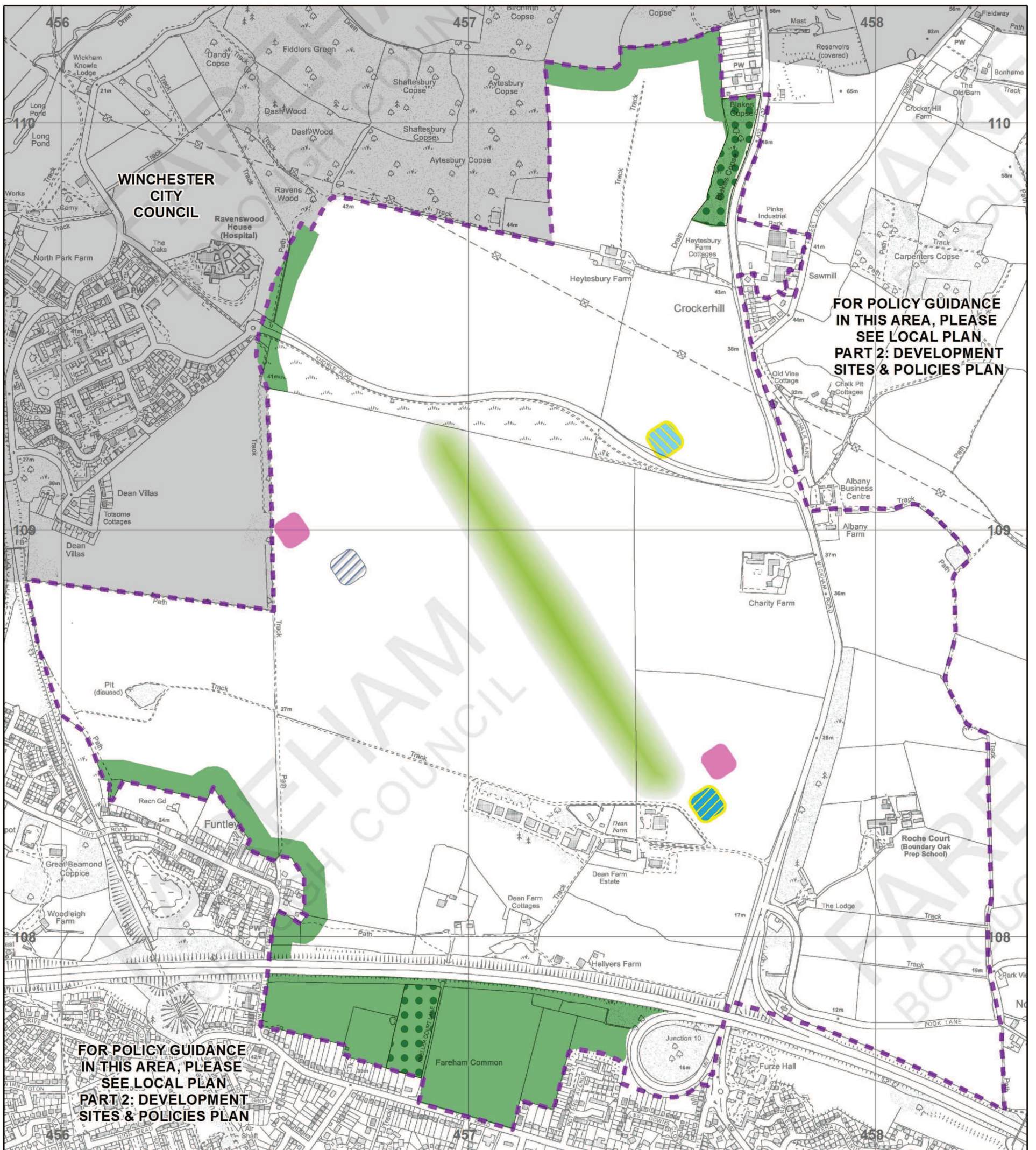


WELBORNE POLICIES MAP



FOR POLICY GUIDANCE
IN THIS AREA, PLEASE
SEE LOCAL PLAN
PART 2: DEVELOPMENT
SITES & POLICIES PLAN









FOR POLICY GUIDANCE
IN THIS AREA, PLEASE
SEE LOCAL PLAN
PART 2: DEVELOPMENT
SITES & POLICIES PLAN

1:10,000



This map is reproduced from Ordnance Survey material with the permission of Ordnance Survey on behalf of the Controller of Her Majesty's Stationary Office © Crown Copyright. Unauthorised reproduction infringes Crown Copyright and may lead to prosecution or civil proceedings. Licence 100019110. 2014
Scale 1:10,000

LEGEND

-  WELBORNE POLICY BOUNDARY (CS13, WEL1-4, WEL6-43)
-  SITES OF IMPORTANCE FOR NATURE CONSERVATION (CS4)
-  WELBORNE SECONDARY SCHOOL POTENTIAL APPROXIMATE LOCATIONS (WEL16)
-  WELBORNE SETTLEMENT BUFFERS (WEL5)
-  WELBORNE CENTRAL PARK APPROXIMATE LOCATION (WEL29)
-  WELBORNE LOCAL CENTRE APPROXIMATE LOCATION (WEL11)
-  WELBORNE DISTRICT CENTRE APPROXIMATE LOCATION (WEL10)
-  WELBORNE COMMUNITY HUB APPROXIMATE LOCATION (WEL12)